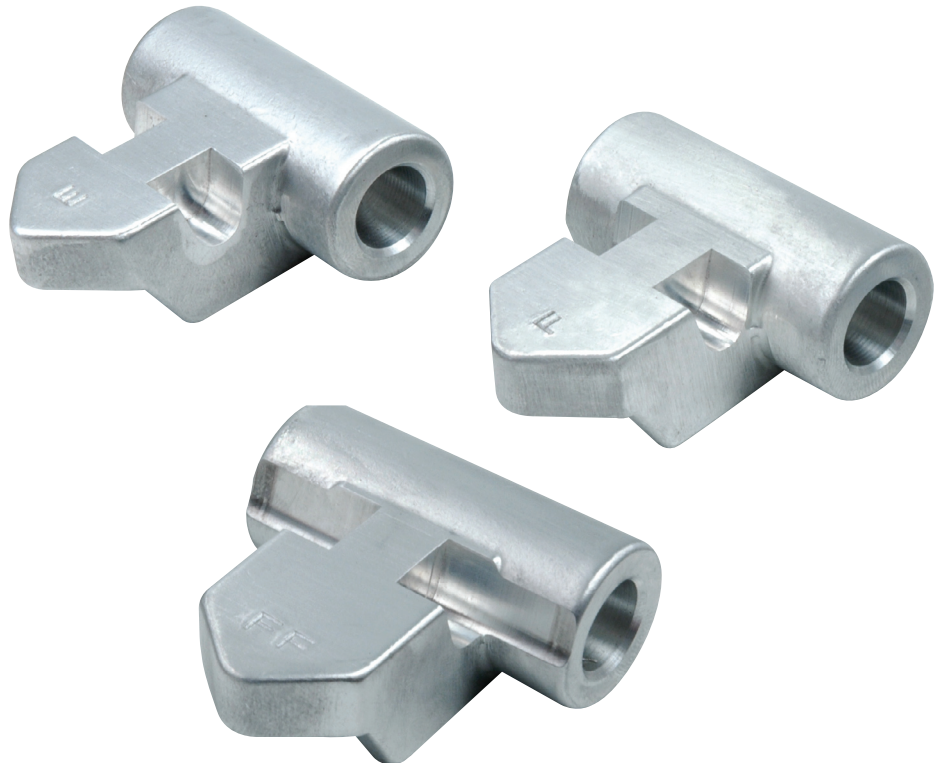


## FEATURES &amp; BENEFITS:

- Made from forged 6061-T6 aluminum
- Firmer shift and better hold
- Replaces hard-to-find OEM levers

**Part No.****36916E**

1 Servo Apply Lever  
OEM "E" Ratio (1.85)

**Part No.****36916F**

1 Servo Apply Lever  
OEM "F" Ratio (2.30)

**Part No.****36916FF**

1 Servo Apply Lever  
Special "FF" Ratio (2.82)

**PART SUMMARY**

These C6 servo apply levers are made from 6061-T6 aluminum forgings that are less susceptible to distortion and cracking than the cast OEM levers. These levers are excellent as replacements for hard-to-find, OEM servo levers that are no longer in production.

Sonnax lever **36916E** is a direct replacement for the OEM "E" ratio lever C6AZ-7330-D. Sonnax lever **36916F** is a direct replacement for the OEM "F" ratio lever C6AZ-7330-E. Both of these levers will provide firmer, cleaner shifts when used with Sonnax "R" code servo **K36528R**.

Sonnax lever **36916FF** has a special, non-stock "FF" ratio (2.82:1). When used with a given servo, this lever will produce a greater band apply force than any of the OEM levers. Due to this aggressive lever ratio, Sonnax does not recommend using this lever with "H" or "R" code servos.