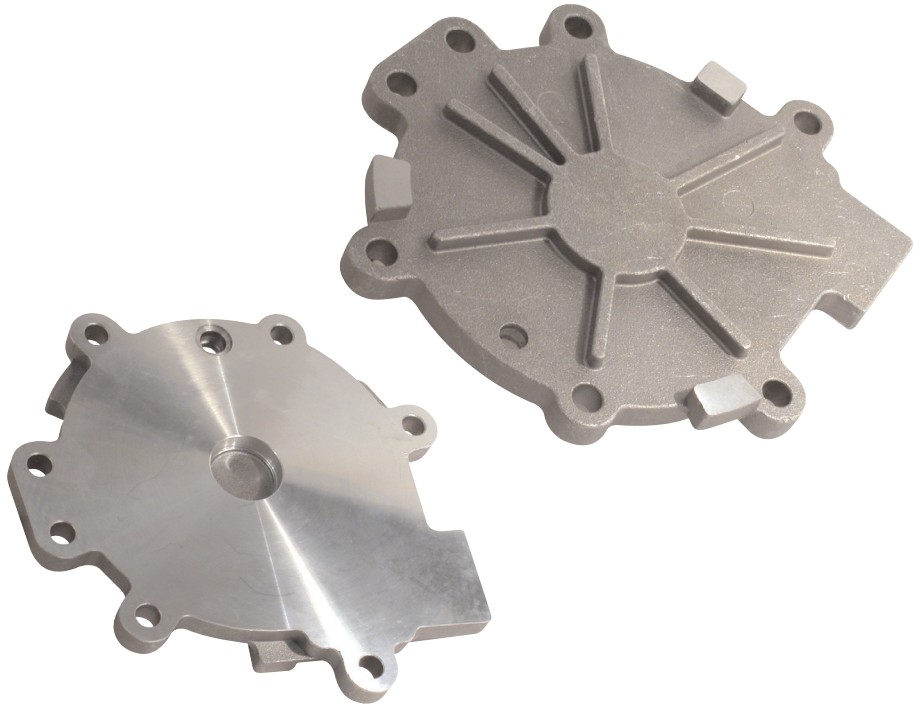


**Features & Benefits:**

- **Upgraded replacement for OEM**
- **Increased thickness to prevent flexing**
- **Die-cast aluminum alloy**
- **Precision machined**
- **Contour designed to allow removal of complete valve body without removing pump cover, unlike other aftermarket covers.**



**Part No.**

**96200-01**

*Pump Cover*

**PART SUMMARY**

Sonnax now offers an upgraded OEM replacement pump cover for AXOD & E, AX4S & AX4N applications. The Sonnax design has increased thickness over OE to prevent flexing and ensure proper sealing.

**Related parts**

- 96201-18** Valve body pump shaft sleeve
- 96855** Pump shaft
- 96855-02K** Upgraded pump shaft
- 96803** Channel plate sleeve
- 96419-01** Pump bearing with integral seal (AX4N 2000 & up)
- 96855-01K** Pump bearing with integral seal (AXOD & E and AX4N pre-2000)