



TORQUE CONVERTER PARTS **CH-90CM-28G**

IMPELLER HUB

Application:

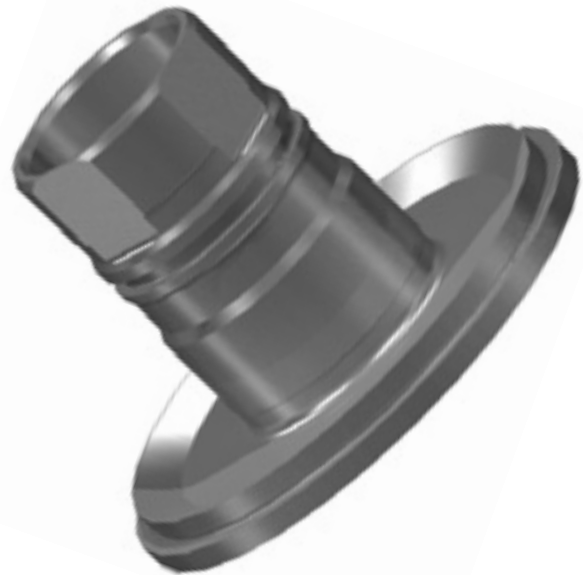
- 2007 - up, Chrysler 68RFE
6.7L Cummins Diesel

Details:

- Flanged style
- Four drive flats
- 1.875" (47.63mm) journal diameter
- 2.597" (65.96mm) assembled length
- 2.780" (70.61mm) overall length
- Hub made from Chrome-moly material
- Pump gear flats and seal diameter hardened to OEM specifications

Associated Parts:

- CH-O-8V, O-ring
- GM-N-8HLT, Enclosed bearing



Part No.

CH-90CM-28G

Impeller Hub

Sold in prepackaged quantities of 1 unit

Please refer to our

TORQUE CONVERTER PARTS CATALOG VOLUME 6 & ONLINE CATALOG AT WWW.SONNAX.COM

CH-90CM-28G is:

Not currently catalogued and should be added to the Chrysler hub identification on page 112.



Sonnax now offers a flanged impeller hub **CH-90CM-28G** for the Chrysler 68RFE torque converter. **CH-90CM-28G** is made of Chrome-moly and hardened to OEM specifications.